



KITCHEN

HANDLES

collection

WT

HARDWARE



style
317
brushed
stainless







style
319.6
matt
black



style
322
brushed
nickel



style
347

brushed
stainless

lip-pull

stainless steel

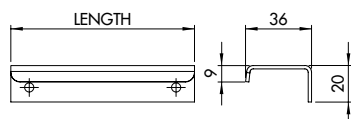
Length	Order Code
30mm	347.030
50mm	347.050
100mm	347.100
200mm	347.200
300mm	347.300
400mm	347.400

matt black

Length	Order Code
50mm	347.050B
100mm	347.100B
200mm	347.200B
300mm	347.300B
400mm	347.400B

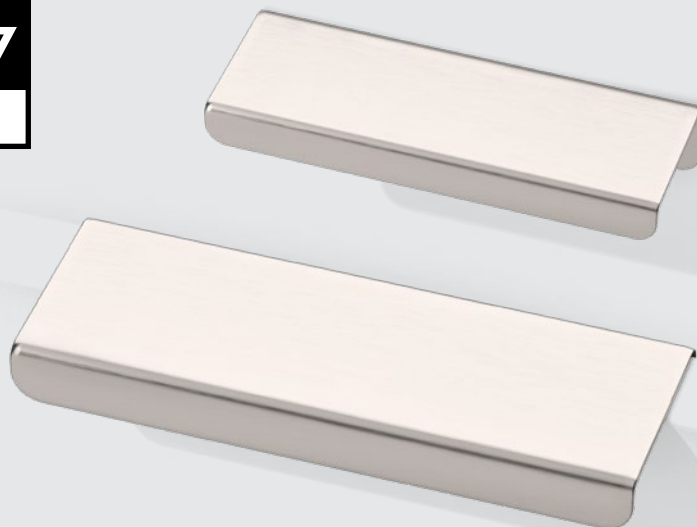
white

Length	Order Code
50mm	347.050W
100mm	347.100W
200mm	347.200W
300mm	347.300W
400mm	347.400W



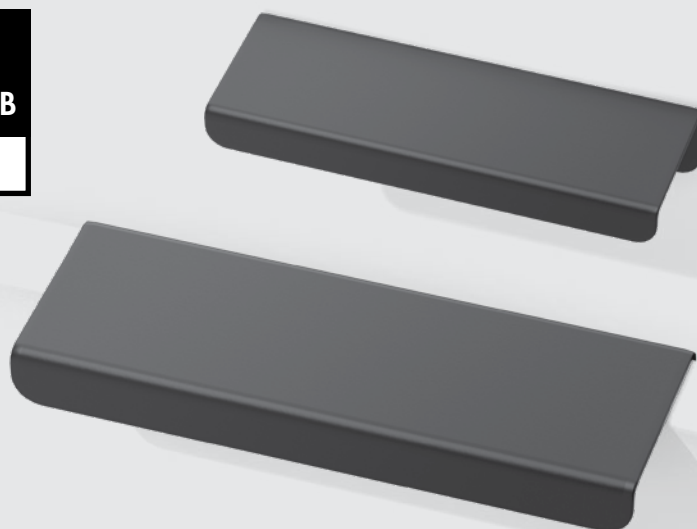
style
347

brushed
stainless



style
347.B

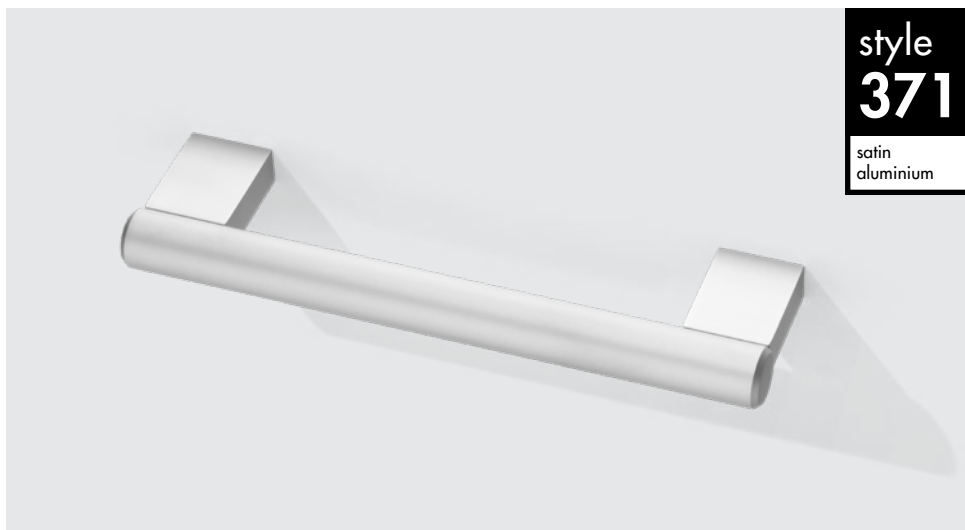
matt
black



style
347.w

white

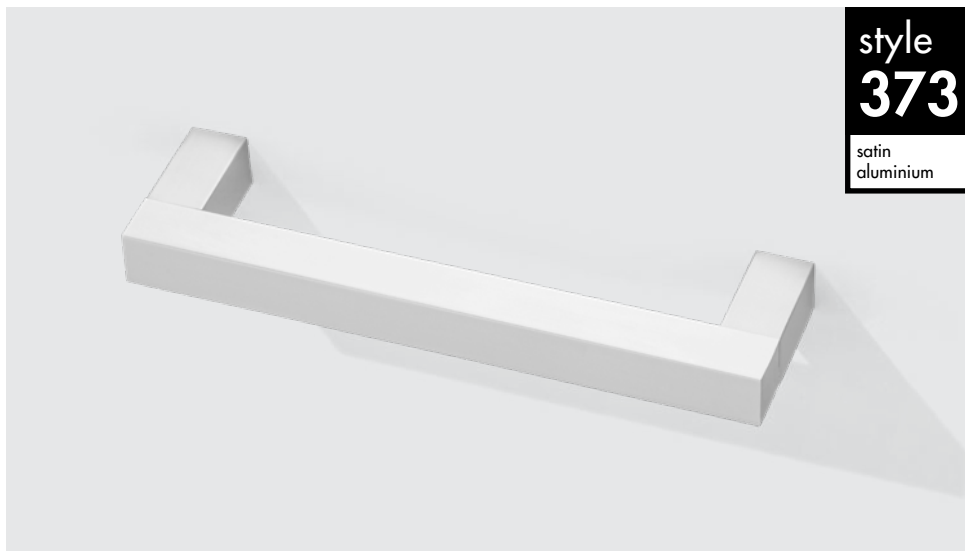
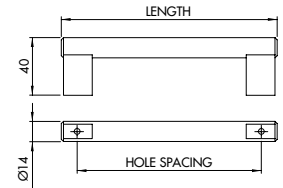




style
371
satin
aluminium

Ø14mm, solid aluminium

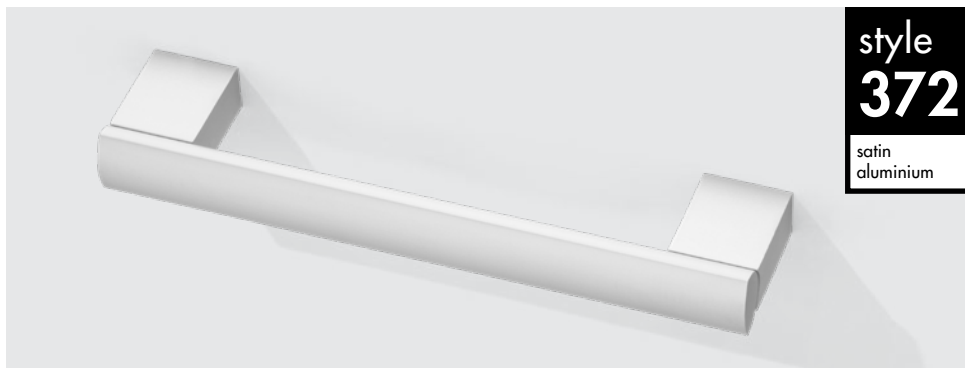
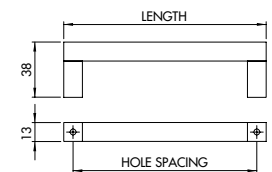
Hole spacing	Length	Order Code
128mm	150mm	371.128
160mm	182mm	371.160
192mm	214mm	371.192
224mm	246mm	371.224
288mm	310mm	371.288
416mm	438mm	371.416



style
373
satin
aluminium

13x13mm, solid aluminium

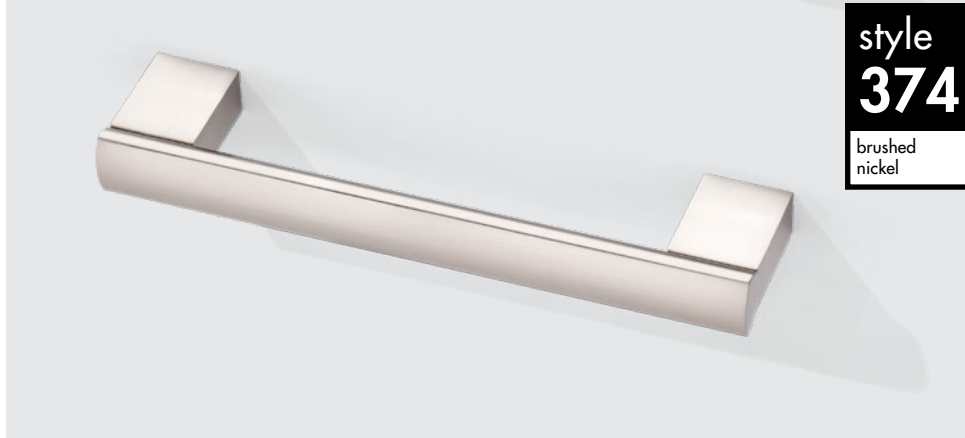
Hole spacing	Length	Order Code
128mm	150mm	373.128
160mm	182mm	373.160
192mm	214mm	373.192
224mm	246mm	373.224
288mm	310mm	373.288
352mm	374mm	373.352
416mm	438mm	373.416



style
372
satin
aluminium

solid aluminium

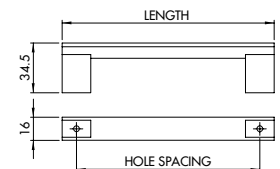
Hole spacing	Length	Order Code
128mm	150mm	372.128
160mm	182mm	372.160
192mm	214mm	372.192
224mm	246mm	372.224
288mm	310mm	372.288
352mm	374mm	372.352
416mm	438mm	372.416



style
374
brushed
nickel

solid aluminium

Hole spacing	Length	Order Code
128mm	150mm	374.128
160mm	182mm	374.160
288mm	310mm	374.288
416mm	438mm	374.416

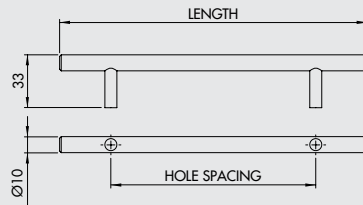


Ø10mm, solid stainless

Hole spacing	Length	Order Code
96mm	160mm	310.096
128mm	192mm	310.128
160mm	224mm	310.160
192mm	256mm	310.192
224mm	288mm	310.224
288mm	352mm	310.288
320mm	384mm	310.320
352mm	416mm	310.352
416mm	480mm	310.416

style
310
brushed
stainless

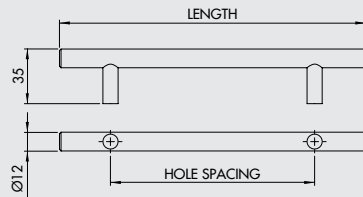
stainless steel t-bar



Ø12mm, solid stainless

Hole spacing	Length	Order Code
0mm	64mm	312.000
96mm	160mm	312.096
128mm	192mm	312.128
160mm	224mm	312.160
224mm	288mm	312.224
288mm	352mm	312.288
320mm	384mm	312.320
352mm	416mm	312.352
416mm	480mm	312.416
480mm	544mm	312.480
736mm	800mm	312.736
832mm	896mm	312.832

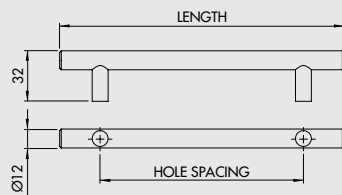
style
312
brushed
stainless



Ø12mm, hollow stainless

Hole spacing	Length	Order Code
96mm	146mm	318.096
128mm	178mm	318.128
160mm	210mm	318.160
224mm	274mm	318.224
288mm	338mm	318.288
352mm	402mm	318.352
416mm	466mm	318.416
480mm	530mm	318.480
544mm	594mm	318.544

style
318
brushed
stainless



style
320

polished
chrome



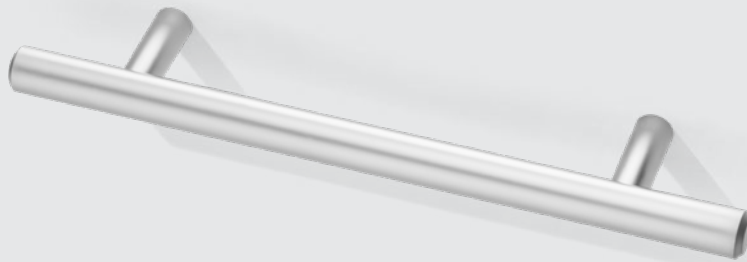
steel t-bar

Ø12mm, solid steel

Hole spacing	Length	Order Code
96mm	160mm	320.096
128mm	192mm	320.128
160mm	224mm	320.160
192mm	256mm	320.192
224mm	288mm	320.224
288mm	352mm	320.288
352mm	416mm	320.352
416mm	480mm	320.416
480mm	544mm	320.480
512mm	576mm	320.512

style
321

satin
chrome



Ø12mm, solid steel

Hole spacing	Length	Order Code
96mm	160mm	321.096
128mm	192mm	321.128
160mm	224mm	321.160
192mm	256mm	321.192
224mm	288mm	321.224
288mm	352mm	321.288
352mm	416mm	321.352
416mm	480mm	321.416
480mm	544mm	321.480
512mm	576mm	321.512

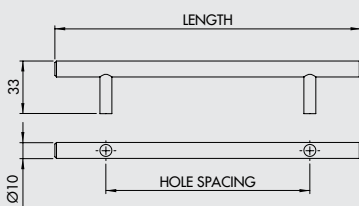
style
322

brushed
nickel



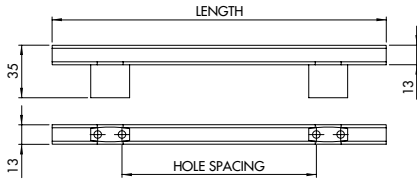
Ø12mm, solid steel

Hole spacing	Length	Order Code
96mm	160mm	322.096
128mm	192mm	322.128
160mm	224mm	322.160
192mm	256mm	322.192
224mm	288mm	322.224
288mm	352mm	322.288
320mm	384mm	322.320
352mm	416mm	322.352
416mm	480mm	322.416
448mm	512mm	322.448
480mm	544mm	322.480
512mm	576mm	322.512
544mm	608mm	322.544



12x12mm, hollow stainless

Hole spacing	Length	Order Code
32mm	75mm	315.032
96mm	186mm	315.096
128mm	218mm	315.128
160mm	250mm	315.160
192mm	282mm	315.192
224mm	314mm	315.224
288mm	378mm	315.288
320mm	410mm	315.320
352mm	442mm	315.352
448mm	538mm	315.448



style
315

brushed
stainless

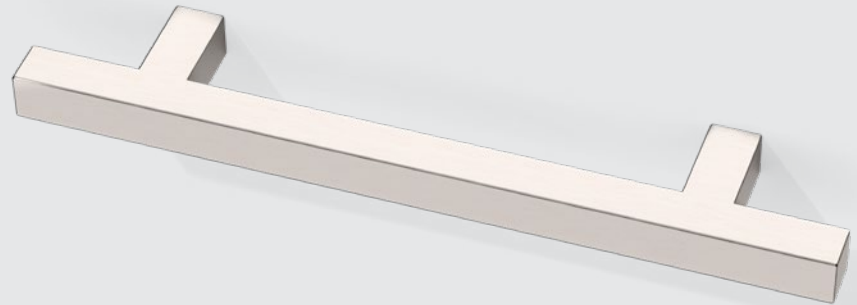


12x12mm, hollow stainless

Hole spacing	Length	Order Code
96mm	160mm	311.096
128mm	192mm	311.128
160mm	224mm	311.160
224mm	288mm	311.224
288mm	352mm	311.288
352mm	416mm	311.352
416mm	480mm	311.416
480mm	544mm	311.480

style
311

brushed
stainless

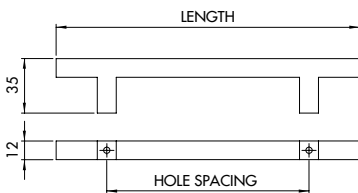
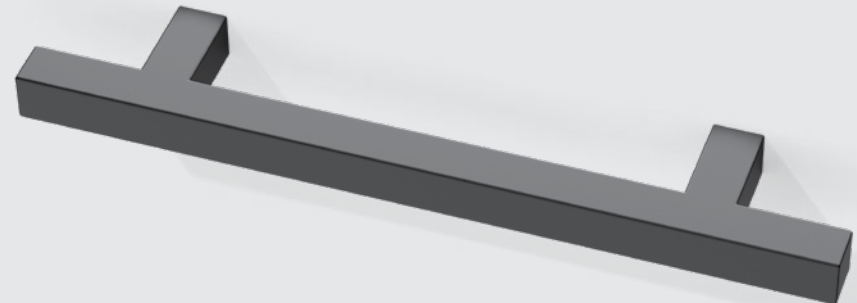


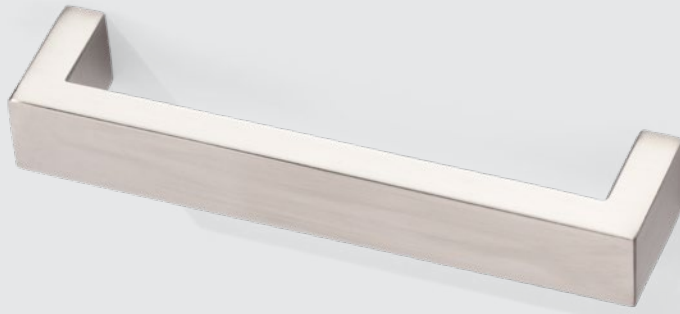
12x12mm, hollow stainless

Hole spacing	Length	Order Code
96mm	160mm	311.096B
128mm	192mm	311.128B
160mm	224mm	311.160B
224mm	288mm	311.224B
288mm	352mm	311.288B
352mm	416mm	311.352B
416mm	480mm	311.416B
480mm	544mm	311.480B

style
311.B

mat
black



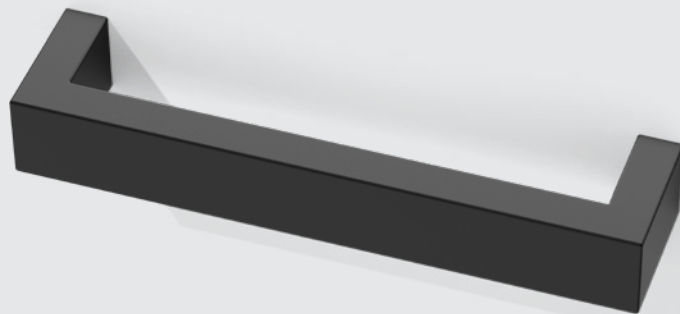


style
317

brushed
stainless

20x10mm, hollow stainless

Hole spacing	Length	Order Code
96mm	106mm	317.096
128mm	138mm	317.128
160mm	170mm	317.160
224mm	234mm	317.224
288mm	298mm	317.288
416mm	426mm	317.416
544mm	554mm	317.544

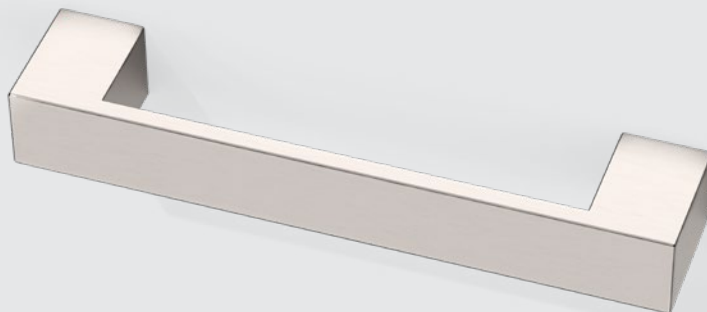
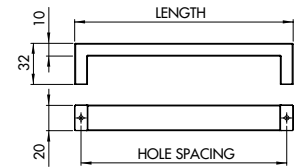


style
317.B

matt
black

20x10mm, hollow stainless

Hole spacing	Length	Order Code
96mm	106mm	317.096B
128mm	138mm	317.128B
160mm	170mm	317.160B
224mm	234mm	317.224B
288mm	298mm	317.288B
416mm	426mm	317.416B
544mm	554mm	317.544B

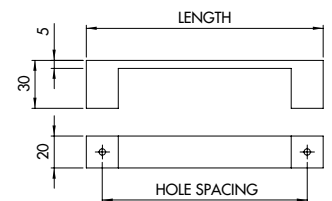


style
327

brushed
stainless

20x5mm, hollow stainless

Hole spacing	Length	Order Code
128mm	148mm	327.128
160mm	180mm	327.160
224mm	244mm	327.224
288mm	308mm	327.288
352mm	372mm	327.352
416mm	436mm	327.416
480mm	500mm	327.480

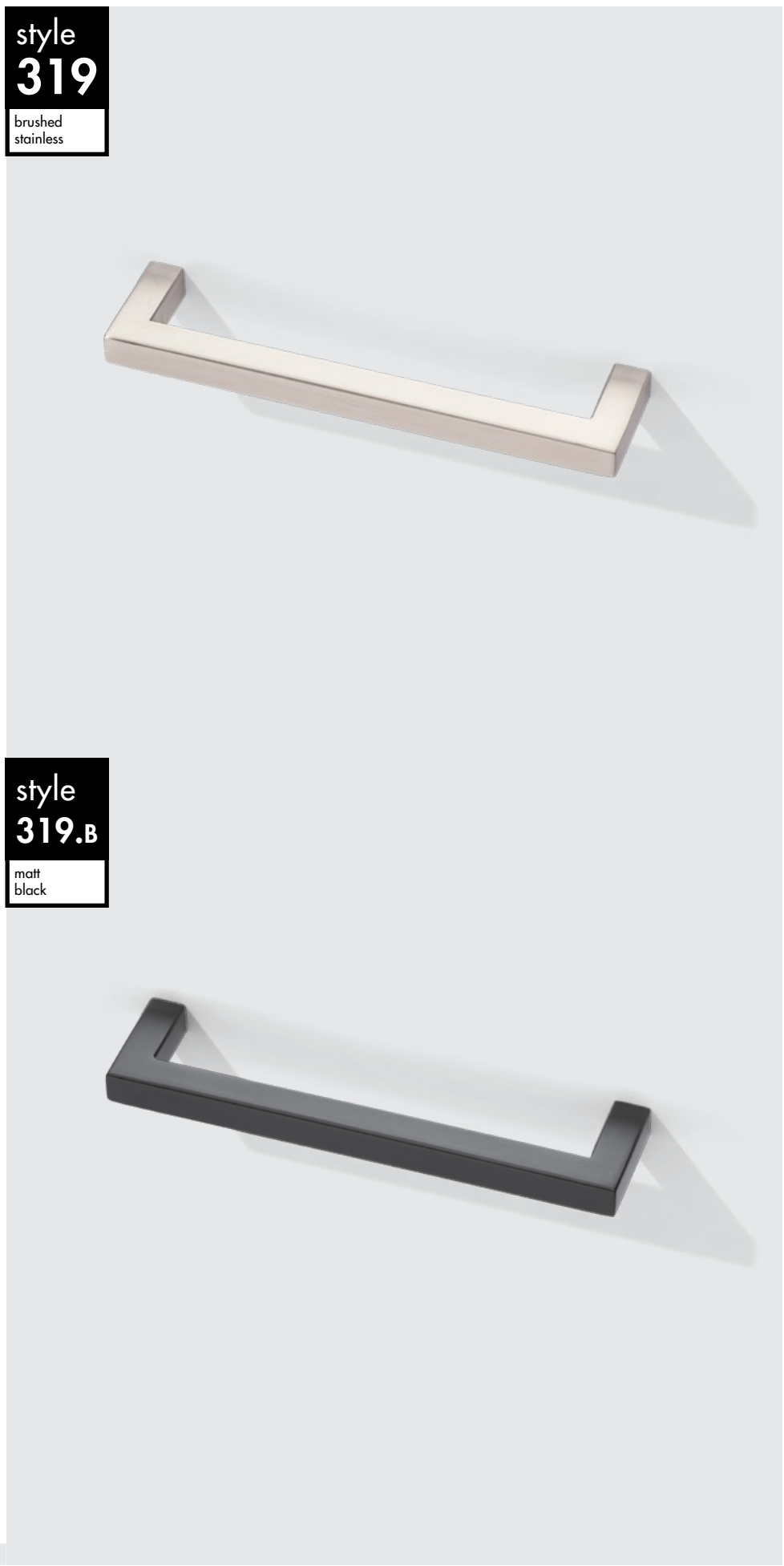


10x10mm, hollow stainless

Hole spacing	Length	Order Code
96mm	106mm	319.096
128mm	138mm	319.128
160mm	170mm	319.160
224mm	234mm	319.224
288mm	298mm	319.288
352mm	362mm	319.352
416mm	426mm	319.416
480mm	490mm	319.480

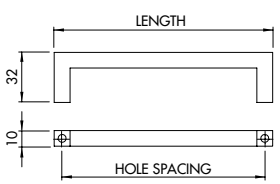
10x10mm, hollow stainless

Hole spacing	Length	Order Code
96mm	106mm	319.096B
128mm	138mm	319.128B
160mm	170mm	319.160B
224mm	234mm	319.224B
288mm	298mm	319.288B
352mm	362mm	319.352B
416mm	426mm	319.416B
480mm	490mm	319.480B



style
319
brushed
stainless

style
319.B
matt
black

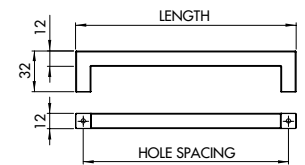




style
316
brushed
stainless

12x12mm, hollow stainless

Hole spacing	Length	Order Code
96mm	108mm	316.096
128mm	140mm	316.128
160mm	172mm	316.160
224mm	236mm	316.224
288mm	300mm	316.288
352mm	364mm	316.352
416mm	428mm	316.416
480mm	492mm	316.480
544mm	556mm	316.544



style
345
brushed
nickel

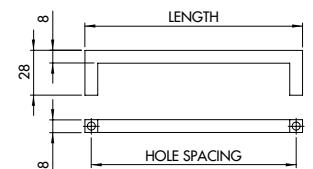
8x8mm, solid zinc alloy

Hole spacing	Length	Order Code
96mm	104mm	345.096
128mm	136mm	345.128
160mm	168mm	345.160
224mm	232mm	345.224
256mm	264mm	345.256
320mm	328mm	345.320
448mm	456mm	345.448

style
346
polished
chrome

8x8mm, solid zinc alloy

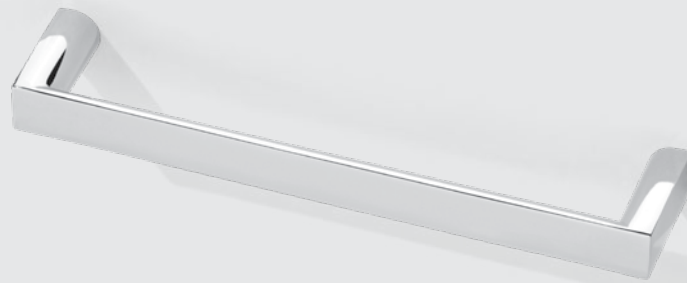
Hole spacing	Length	Order Code
96mm	104mm	346.096
128mm	136mm	346.128
160mm	168mm	346.160
224mm	232mm	346.224
256mm	264mm	346.256
320mm	328mm	346.320
448mm	456mm	346.448



12mm wide, solid zinc alloy

Hole spacing	Length	Order Code
96mm	104mm	342.096
128mm	136mm	342.128
160mm	168mm	342.160
224mm	232mm	342.224
288mm	296mm	342.288
320mm	328mm	342.320

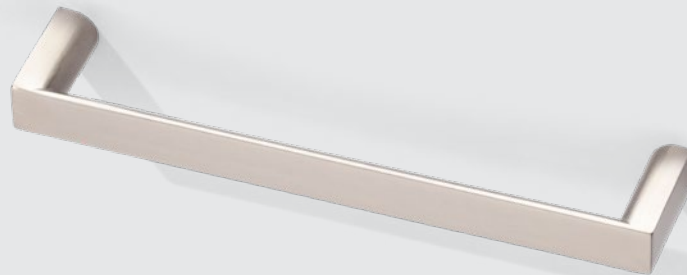
style
342
polished
chrome



12mm wide, solid zinc alloy

Hole spacing	Length	Order Code
96mm	104mm	343.096
128mm	136mm	343.128
160mm	168mm	343.160
224mm	232mm	343.224
288mm	296mm	343.288
320mm	328mm	343.320
448mm	456mm	343.448

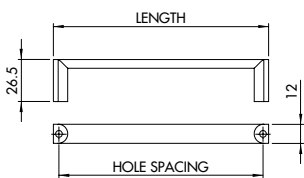
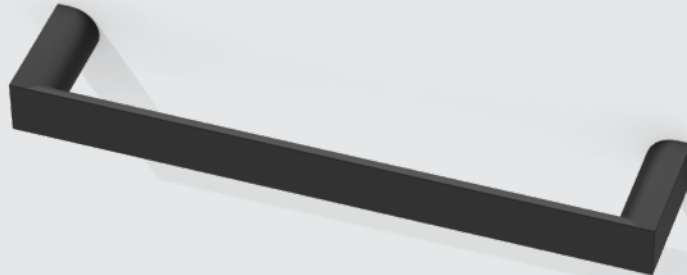
style
343
brushed
nickel



12mm wide, solid zinc alloy

Hole spacing	Length	Order Code
96mm	104mm	343.096B
128mm	136mm	343.128B
160mm	168mm	343.160B
224mm	232mm	343.224B
288mm	296mm	343.288B
320mm	328mm	343.320B
448mm	456mm	343.448B

style
343.B
matt
black

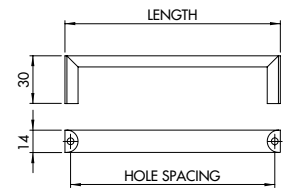




style
336
brushed
nickel

14mm wide, solid zinc alloy

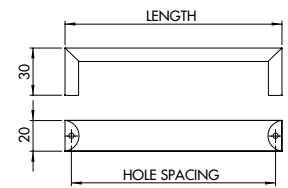
Hole spacing	Length	Order Code
128mm	135mm	336.128
160mm	167mm	336.160



style
378
brushed
nickel

20mm wide, solid aluminium

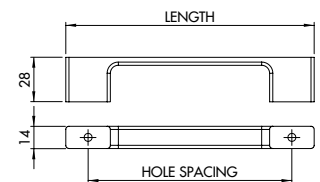
Hole spacing	Length	Order Code
96mm	104mm	378.096
128mm	136mm	378.128
160mm	168mm	378.160
256mm	264mm	378.256



style
340
brushed
nickel

zinc alloy

Hole spacing	Length	Order Code
128mm	155mm	340.128
160mm	185mm	340.160

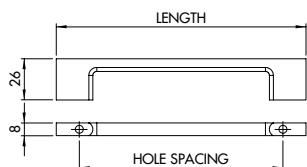


zinc alloy

Hole spacing	Length	Order Code
96mm	124mm	334.096
128mm	156mm	334.128
160mm	188mm	334.160
192mm	220mm	334.192
256mm	284mm	334.256
320mm	348mm	334.320

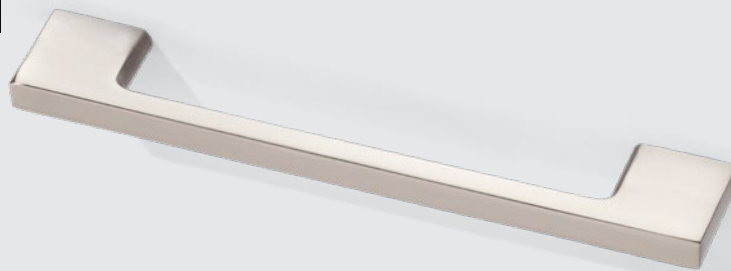
zinc alloy

Hole spacing	Length	Order Code
96mm	124mm	334.096B
128mm	156mm	334.128B
160mm	188mm	334.160B
192mm	220mm	334.192B
256mm	284mm	334.256B
320mm	348mm	334.320B



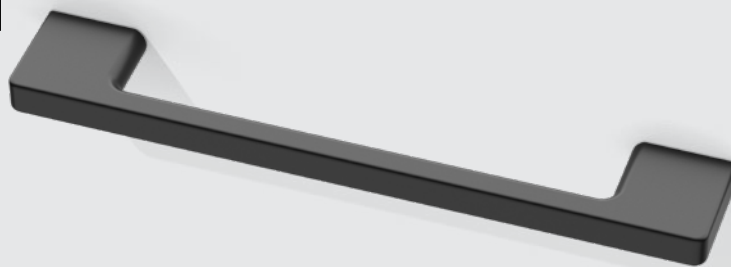
style
334

brushed
nickel



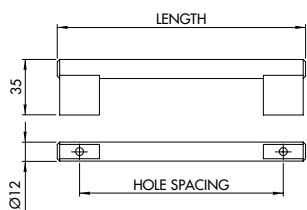
style
334.B

matt
black



steel & zinc alloy

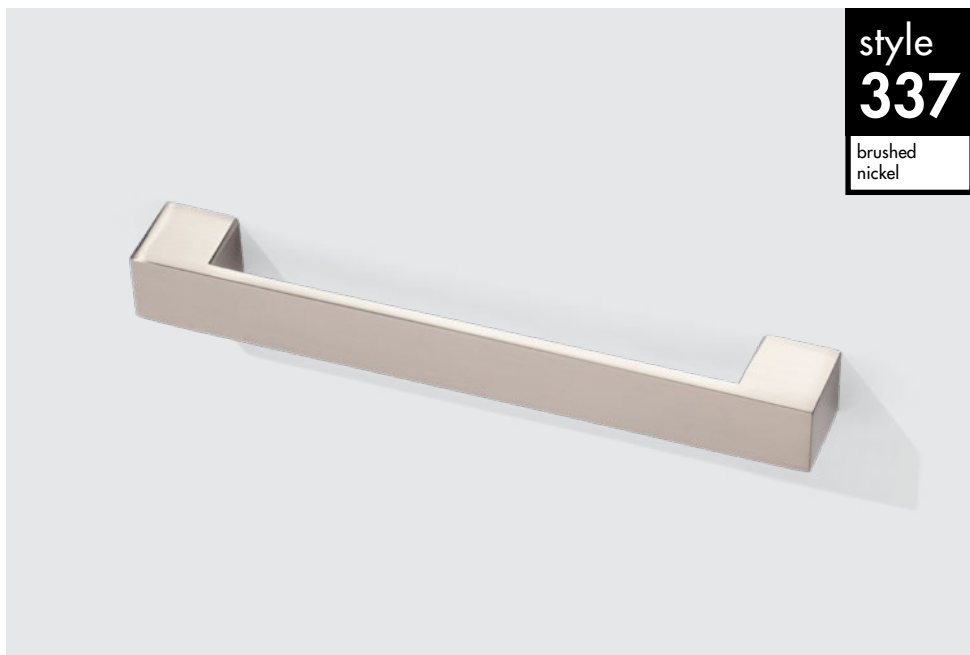
Hole spacing	Length	Order Code
96mm	120mm	323.096
128mm	152mm	323.128
160mm	184mm	323.160
192mm	216mm	323.192
224mm	248mm	323.224
288mm	312mm	323.288
352mm	376mm	323.352
416mm	440mm	323.416
448mm	472mm	323.448
480mm	504mm	323.480
512mm	536mm	323.512



style
323

brushed
nickel

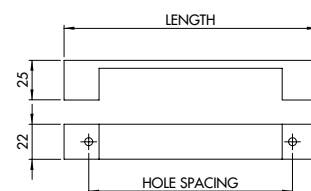




style
337
brushed
nickel

zinc alloy

Hole spacing	Length	Order Code
128mm	158mm	337.128
160mm	190mm	337.160
192mm	222mm	337.192



style
352.0
polished
chrome

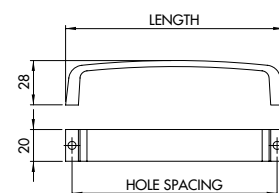
solid zinc alloy

Hole spacing	Length	Order Code
128mm	136mm	352.028
160mm	168mm	352.060

style
352.2
brushed
nickel

solid zinc alloy

Hole spacing	Length	Order Code
128mm	136mm	352.128
160mm	168mm	352.160

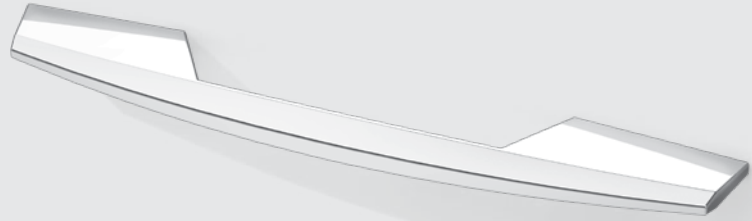


zinc alloy

Hole spacing	Length	Order Code
128mm	190mm	332.028
256mm	314mm	332.056

style
332.0

polished
chrome

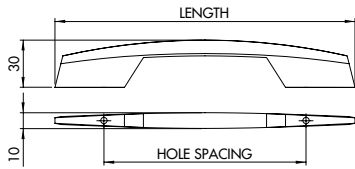


zinc alloy

Hole spacing	Length	Order Code
128mm	190mm	332.128
256mm	314mm	332.256

style
332.2

brushed
nickel

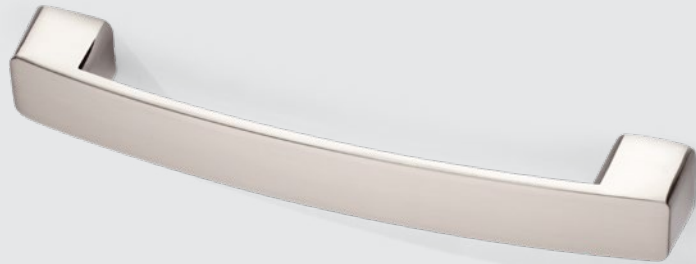


zinc alloy

Hole spacing	Length	Order Code
128mm	159mm	348.128
160mm	191mm	348.160
192mm	225mm	348.192

style
348

brushed
nickel

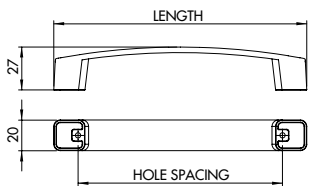


zinc alloy

Hole spacing	Length	Order Code
128mm	159mm	349.128
160mm	191mm	349.160
192mm	225mm	349.192

style
349

polished
chrome



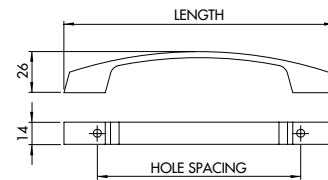


style
335

brushed
nickel

zinc alloy

Hole spacing	Length	Order Code
128mm	170mm	335.128
160mm	206mm	335.160

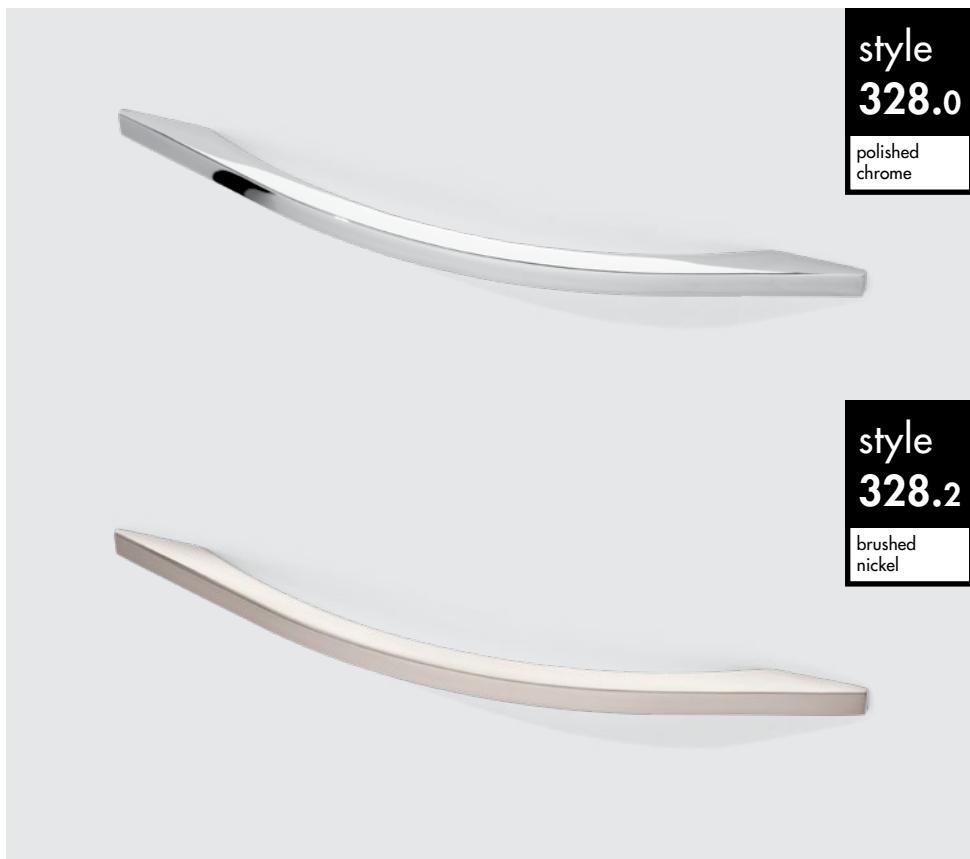
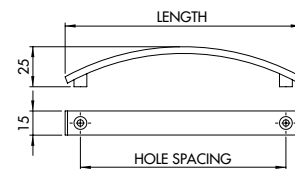


style
330

brushed
nickel

zinc alloy

Hole spacing	Length	Order Code
96mm	117mm	330.096
128mm	149mm	330.128
160mm	181mm	330.160
224mm	246mm	330.224



style
328.0

polished
chrome

style
328.2

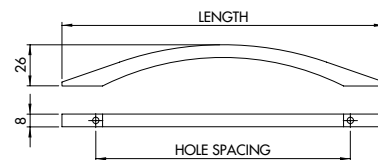
brushed
nickel

solid zinc alloy

Hole spacing	Length	Order Code
160mm	203mm	328.060
320mm	377mm	328.032

solid zinc alloy

Hole spacing	Length	Order Code
160mm	203mm	328.160
320mm	377mm	328.320



solid aluminium

Hole spacing	Length	Order Code
128mm	149mm	376.128
160mm	186mm	376.160
224mm	255mm	376.224
320mm	364mm	376.320

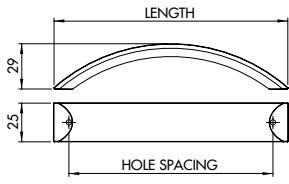
style
376
polished
chrome



solid aluminium

Hole spacing	Length	Order Code
128mm	149mm	377.128
160mm	186mm	377.160
224mm	255mm	377.224
320mm	364mm	377.320

style
377
brushed
nickel



solid zinc alloy

Hole spacing	Length	Order Code
128mm	140mm	329.028

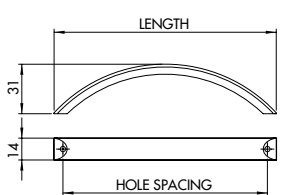
style
329.0
polished
chrome



solid zinc alloy

Hole spacing	Length	Order Code
128mm	140mm	329.228

style
329.2
brushed
nickel



style
338.0

polished
chrome



style
338.1

satin
chrome



style
338.2

brushed
nickel



zinc alloy

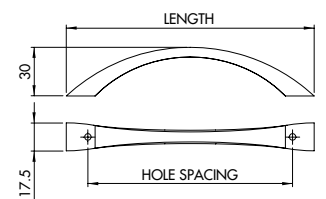
Hole spacing	Length	Order Code
128mm	154mm	338.028

zinc alloy

Hole spacing	Length	Order Code
128mm	154mm	338.128

zinc alloy

Hole spacing	Length	Order Code
128mm	154mm	338.228



slim bow

solid zinc alloy

Hole spacing	Length	Order Code
96mm	114mm	300.096
128mm	152mm	300.028

style
300.0

polished
chrome



solid zinc alloy

Hole spacing	Length	Order Code
96mm	114mm	300.196
128mm	152mm	300.128

style
300.1

satin
chrome



solid zinc alloy

Hole spacing	Length	Order Code
96mm	114mm	300.296
128mm	152mm	300.228

style
300.2

brushed
nickel



solid zinc alloy

Hole spacing	Length	Order Code
96mm	114mm	300.396
128mm	152mm	300.328

style
300.3

gold

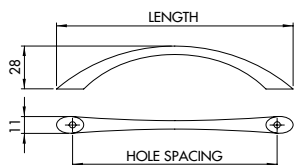


solid zinc alloy

Hole spacing	Length	Order Code
96mm	114mm	300.496B
128mm	152mm	300.428B

style
300.B

matt
black



bow



style
302.0

polished
chrome

Ø10mm solid steel

Hole spacing	Length	Order Code
96mm	114mm	302.096
128mm	152mm	302.028
160mm	192mm	302.060
224mm	264mm	302.024
288mm	340mm	302.088



style
302.1

satin
chrome

Ø10mm solid steel

Hole spacing	Length	Order Code
96mm	114mm	302.196
128mm	152mm	302.128
160mm	192mm	302.160
224mm	264mm	302.124
288mm	340mm	302.188

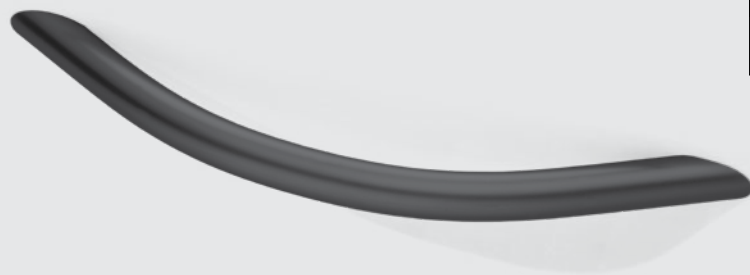


style
302.2

brushed
nickel

Ø10mm solid steel

Hole spacing	Length	Order Code
96mm	114mm	302.296
128mm	152mm	302.228
160mm	192mm	302.260
224mm	264mm	302.224
288mm	340mm	302.288

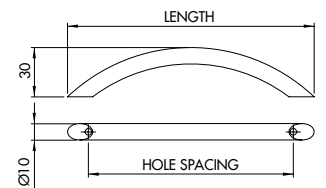


style
302.4

matt
black

Ø10mm solid steel

Hole spacing	Length	Order Code
96mm	114mm	302.496
128mm	152mm	302.428
160mm	192mm	302.460



d-end

Ø10mm solid steel

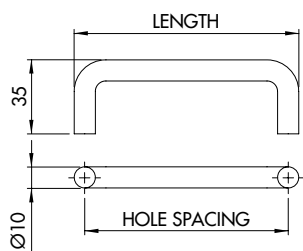
Hole spacing	Length	Order Code
96mm	106mm	314.096
128mm	138mm	314.028
160mm	170mm	314.060
224mm	234mm	314.024
288mm	298mm	314.088

Ø10mm solid steel

Hole spacing	Length	Order Code
96mm	106mm	314.196
128mm	138mm	314.128
160mm	170mm	314.160
224mm	234mm	314.124
288mm	298mm	314.188

Ø10mm solid steel

Hole spacing	Length	Order Code
96mm	106mm	314.296
128mm	138mm	314.228
160mm	170mm	314.260
224mm	234mm	314.224
288mm	298mm	314.288



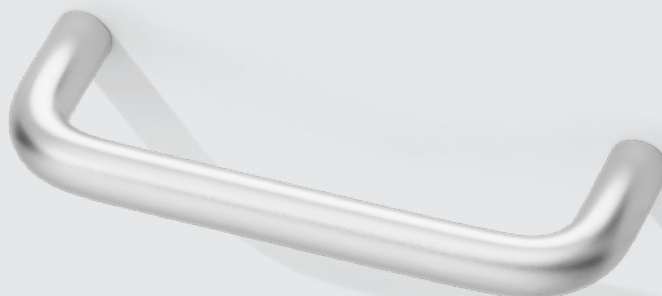
style
314.0

polished
chrome



style
314.1

satin
chrome



style
314.2

brushed
nickel



recessed handles

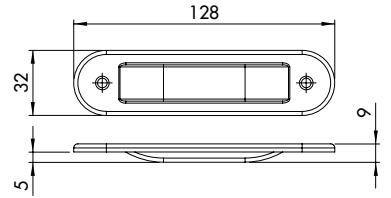
recessed
032

polished
chrome



zinc alloy

Hole size	Size	Order Code
80x22x5mm	128x32mm	341.032



recessed
232

brushed
nickel

zinc alloy

Hole size	Size	Order Code
80x22x5mm	128x32mm	341.232

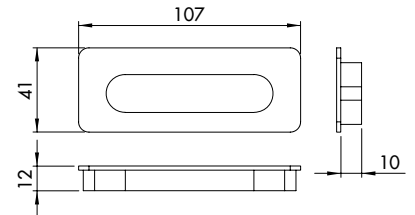


recessed
107

brushed
nickel

zinc alloy

Hole size	Size	Order Code
103x30x10mm	107x41mm	341.107



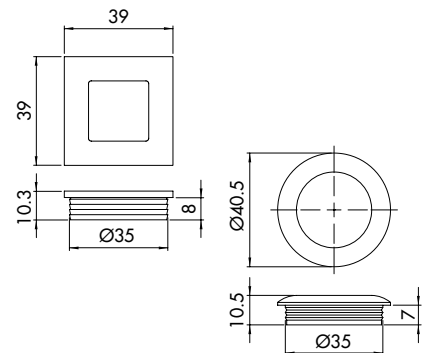
recessed
035

brushed
nickel



square, zinc alloy

Hole size	Size	Order Code
Ø35x8mm	39x39mm	341.035



recessed
135

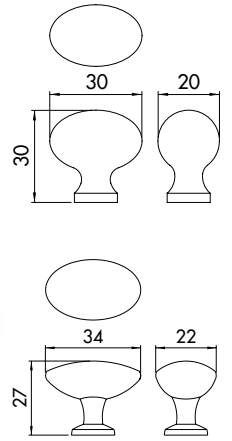
brushed
nickel

round, zinc alloy

Hole size	Size	Order Code
Ø35x7mm	Ø40mm	341.135

football knobs

knob
10



satin chrome

Order Code 380.111

gold

Order Code 380.310

polished chrome

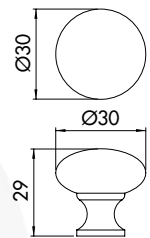
Order Code 380.011

brushed nickel

Order Code 380.211

mushroom knobs

knob
20



satin chrome

Order Code 380.120

gold

Order Code 380.320

polished chrome

Order Code 380.020

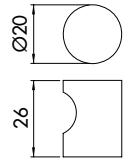
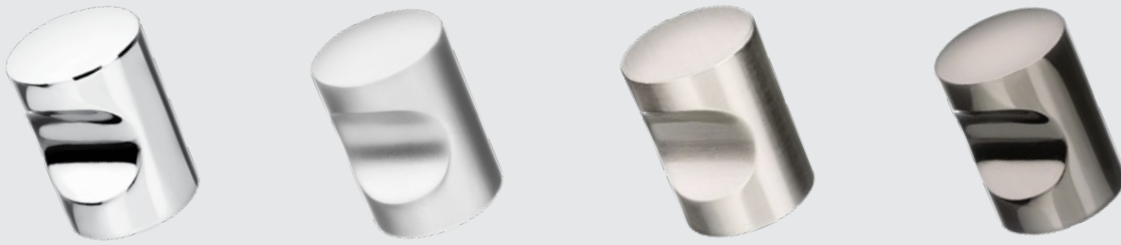
brushed nickel

Order Code 380.220

matt black

Order Code 380.420B

**knob
40**



polished chrome

Order Code **380.040**

satin chrome

Order Code **380.140**

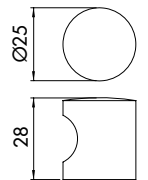
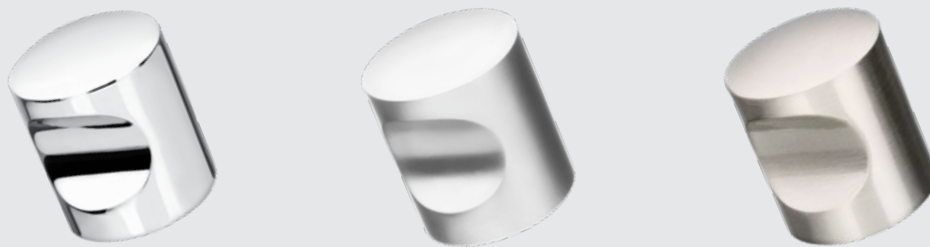
brushed nickel

Order Code **380.240**

black nickel

Order Code **380.440**

**knob
50**



polished chrome

Order Code **380.050**

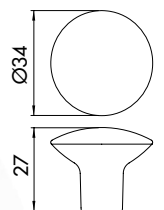
satin chrome

Order Code **380.150**

brushed nickel

Order Code **380.250**

**knob
60**



polished chrome

Order Code **380.060**

satin chrome

Order Code **380.160**

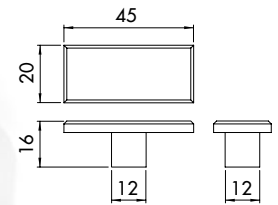
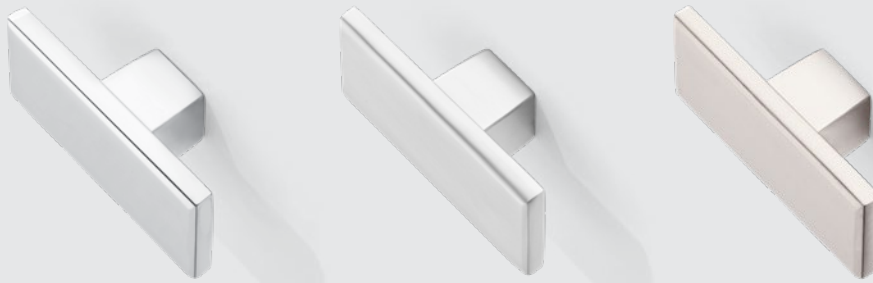
brushed nickel

Order Code **380.260**

matt black

Order Code **380.460B**

**knob
70**



polished chrome

Order Code **380.070**

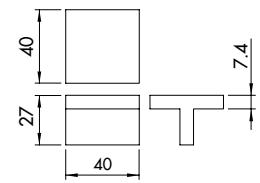
satin chrome

Order Code **380.170**

brushed nickel

Order Code **380.270**

**knob
74**



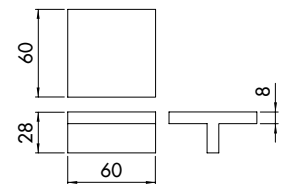
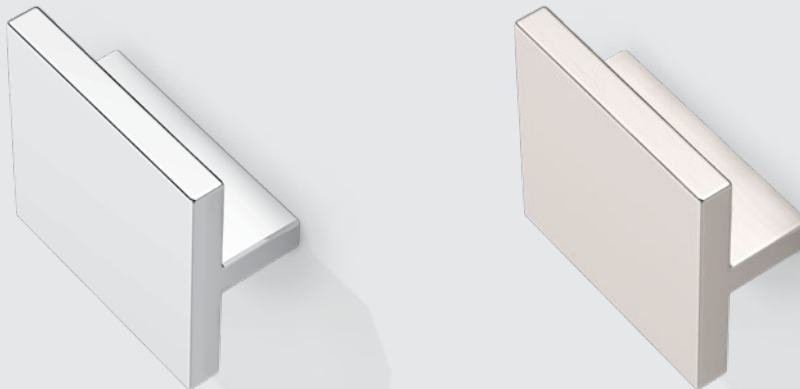
polished chrome

Order Code **380.074**

brushed nickel

Order Code **380.274**

**knob
76**



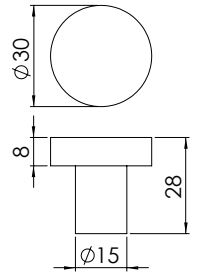
polished chrome

Order Code **380.076**

brushed nickel

Order Code **380.276**

**knob
90**



polished stainless

Order Code 380.090

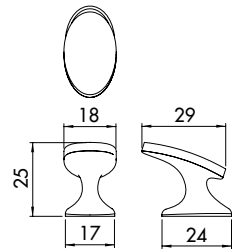
brushed stainless

Order Code 380.290

matt black

Order Code 380.480B

**knob
100**



polished chrome

Order Code 381.100

brushed nickel

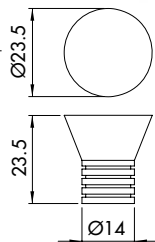
Order Code 381.102

**knob
110**



brushed nickel

Order Code 381.010

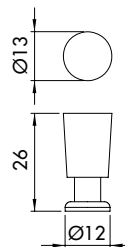


**knob
111**



polished chrome

Order Code 381.011

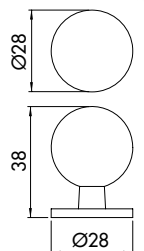


**knob
112**



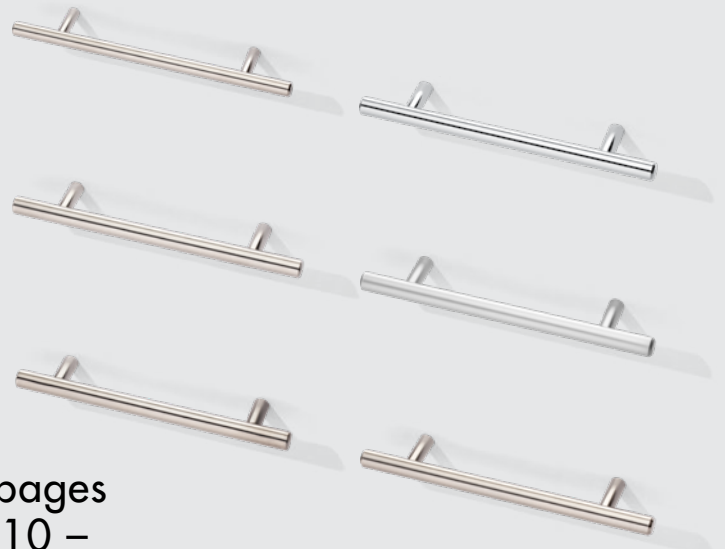
brushed nickel

Order Code 381.012





pages
8 –
9



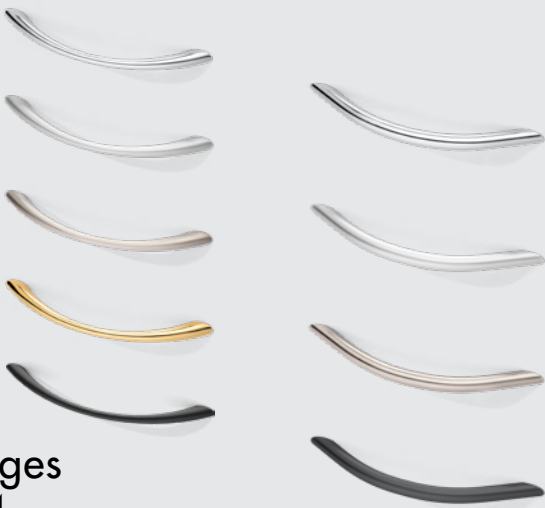
pages
10 –
11



pages
16 –
17



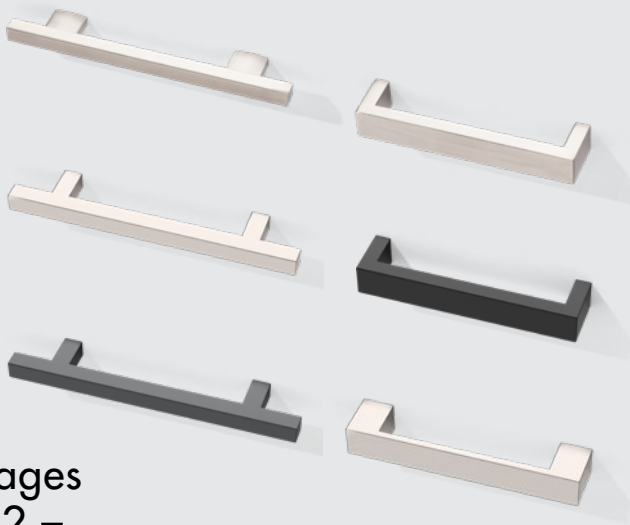
pages
18 –
19



pages
24 –
25



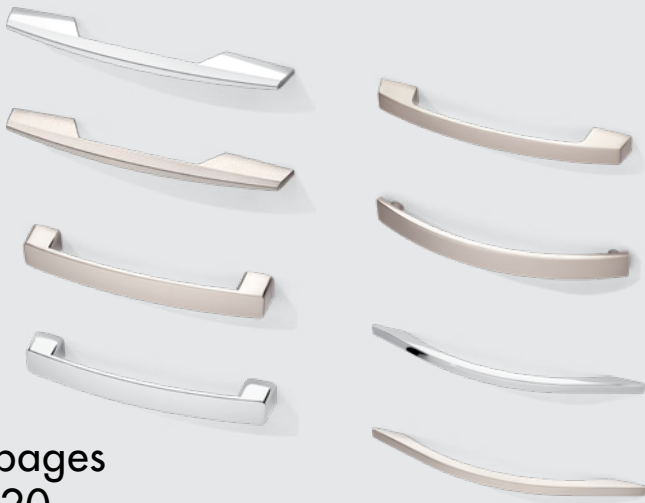
pages
26 –
27



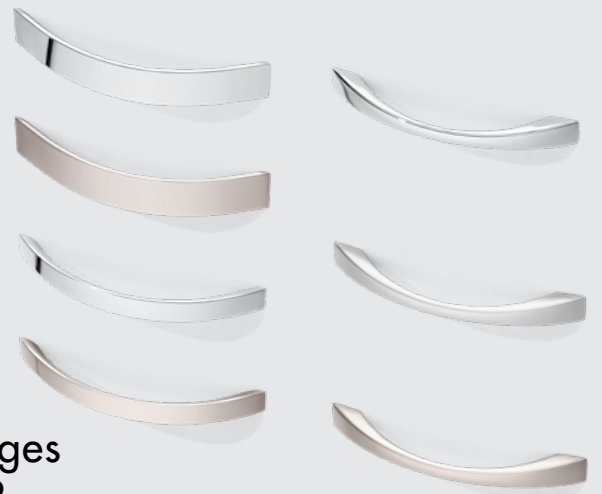
pages
12 –
13



pages
14 –
15



pages
20 –
21



pages
22 –
23



pages
28 –
29



pages
30 –
31

wthardware.com.au

2 / 191-195 Greens Rd
(Greens Road Business Park)
Dandenong South VIC 3175

(03) 9792 0407
(03) 9792 0408 (fax)
sales@wthardware.com.au



HARDWARE